

Benefits and Uses of HD 3D Modelling

A4A NDT Forum

Charles Janecka

Long Beach, CA

OLYMPUS



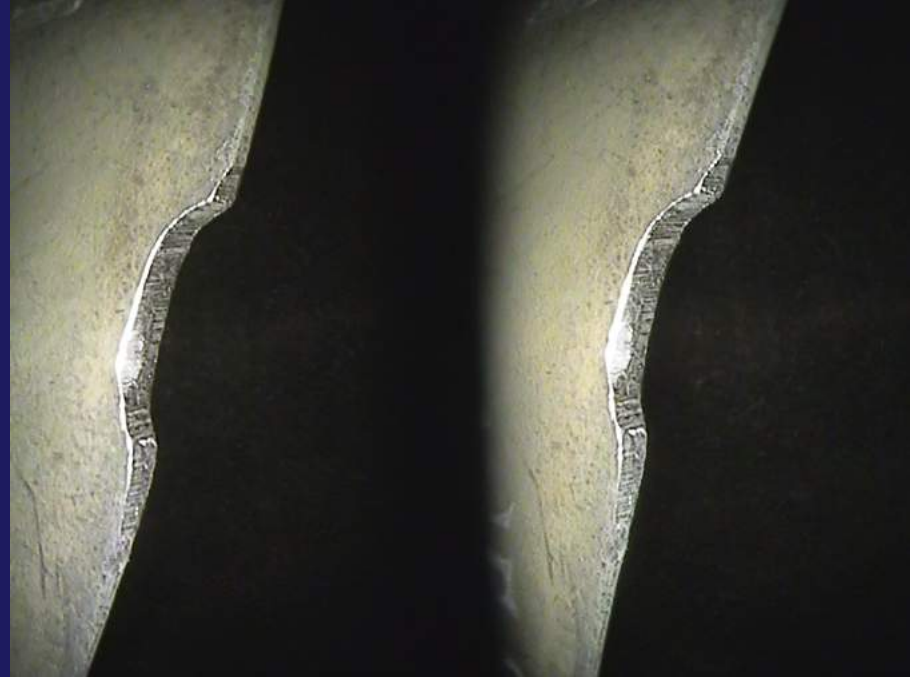
Agenda

1. Measuring with confidence
2. HD/Wide Stereo Measurement
3. Feature overview
4. Basic Purpose of 3D Modelling



More Easily Understand Where the Point is

- 1. Not always easy to know the real shape of the target



More Easily Understand Where the Point is

1. Not always easy to know the real shape of the target
2. We go to the 3D Model



More Easily Understand Where the Point is

1. Not always easy to know the real shape of the target
2. We go to the 3D Model
3. Rotate to see the shape of the blend



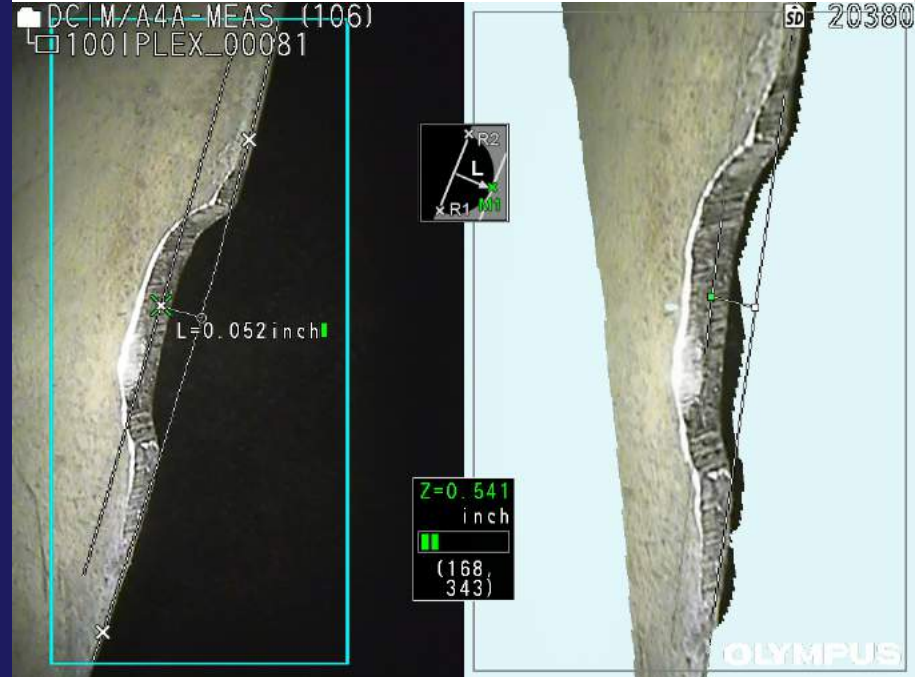
More Easily Understand Where the Point is

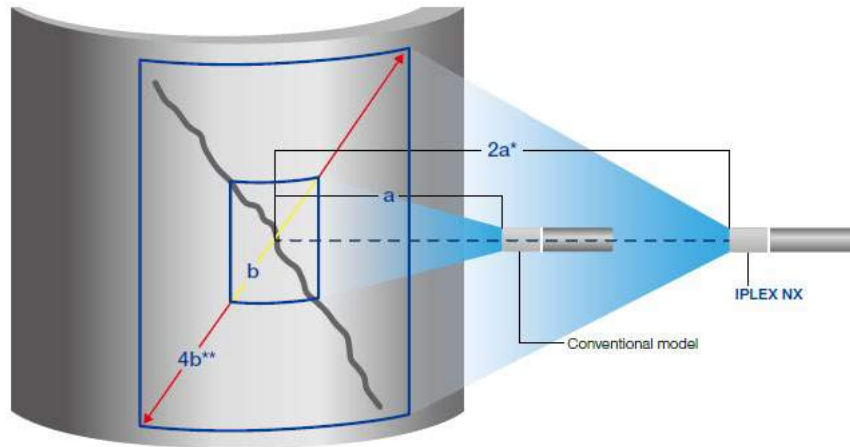
1. Not always easy to know the real shape of the target
2. We go to the 3D Model
3. Rotate to see the shape of the blend
4. Use as an aid while measuring



More Easily Understand Where the Point is

1. Not always easy to know the real shape of the target
2. We go to the 3D Model
3. Rotate to see the shape of the blend
4. Use as an aid while measuring





HD/Wide Stereo Measurement

1. High Resolution Measurement
 - i. One to One Matching
 - ii. Higher Accuracy
 - iii. Measure From Farther Away

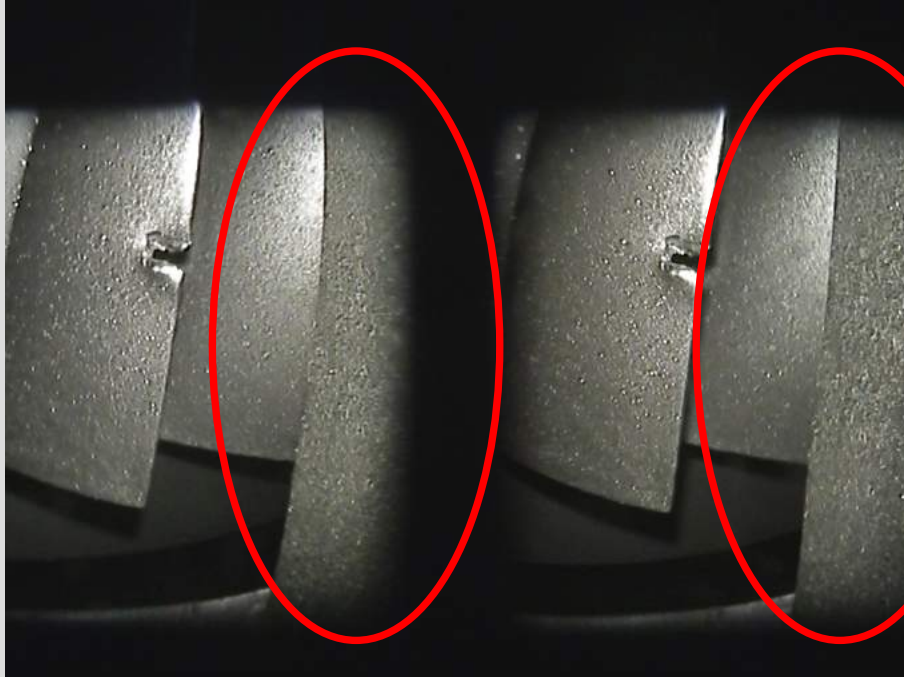


HD/Wide Stereo Measurement

1. High Resolution Measurement
 - i. One to One Matching
 - ii. Higher Accuracy
 - iii. Measure From Farther Away
2. You may have unwanted blades or stators in your FOV

HD/Wide Stereo Measurement

1. High Resolution Measurement
 - i. One to One Matching
 - ii. Higher Accuracy
 - iii. Measure From Farther Away
2. You may have unwanted blades or stators in your FOV



DCIM/A4A-MEAS (008)
A4A-MEAS_00004

SD 20539



A4A



OLYMPUS

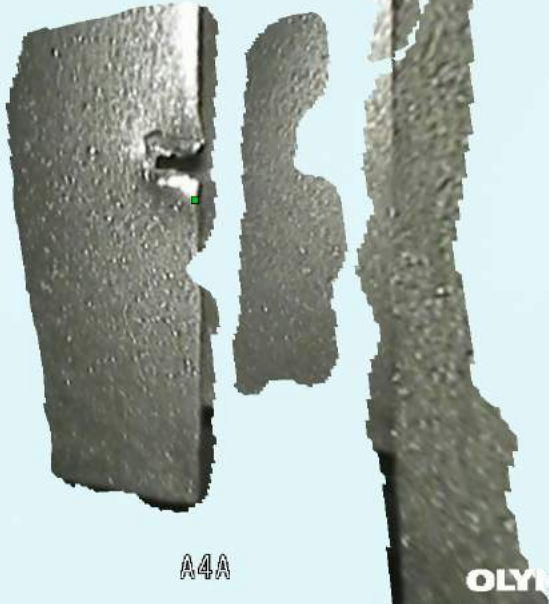
OLYMPUS

HD/Wide Stereo Measurement

1. High Resolution Measurement
 - i. One to One Matching
 - ii. Higher Accuracy
 - iii. Measure From Farther Away
2. You may have unwanted blades or stators in your FOV

DCIM/A4A-MEAS (010)
A4A-MEAS_00004

SD 20536



HD/Wide Stereo Measurement

1. High Resolution Measurement
 - i. One to One Matching
 - ii. Higher Accuracy
 - iii. Measure From Farther Away
2. You may have unwanted blades or stators in your FOV

DCIM/A4A-MEAS (020)
A4A-MEAS_00004

SD 20521
S



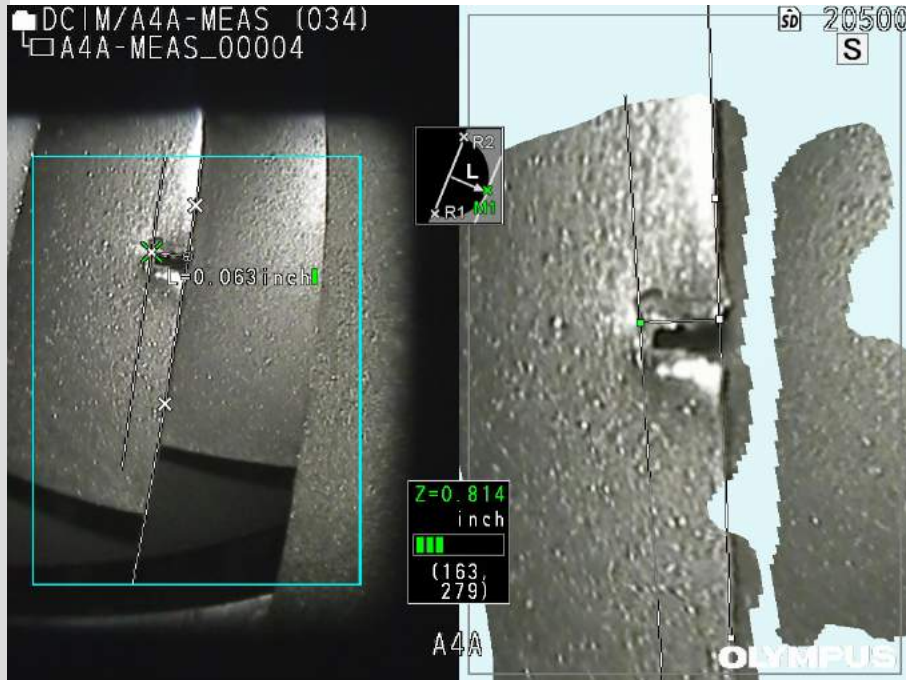
A4A

OLYMPUS

OLYMPUS

HD/Wide Stereo Measurement

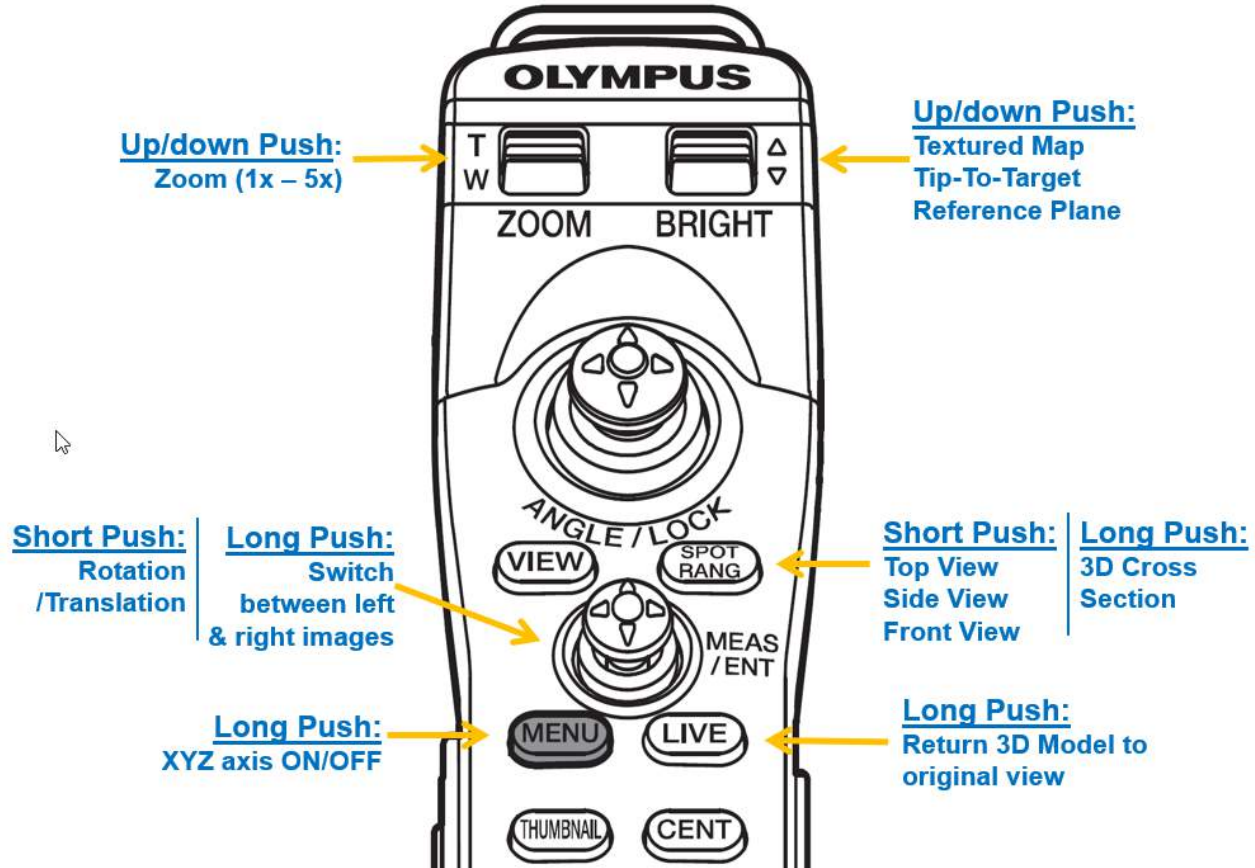
1. High Resolution Measurement
 - i. One to One Matching
 - ii. Higher Accuracy
 - iii. Measure From Farther Away
2. You may have unwanted blades or stators in your FOV



HD/Wide Stereo Measurement

1. High Resolution Measurement
 - i. One to One Matching
 - ii. Higher Accuracy
 - iii. Measure From Farther Away
2. You may have unwanted blades or stators in your FOV

Feature Overview



Feature Overview

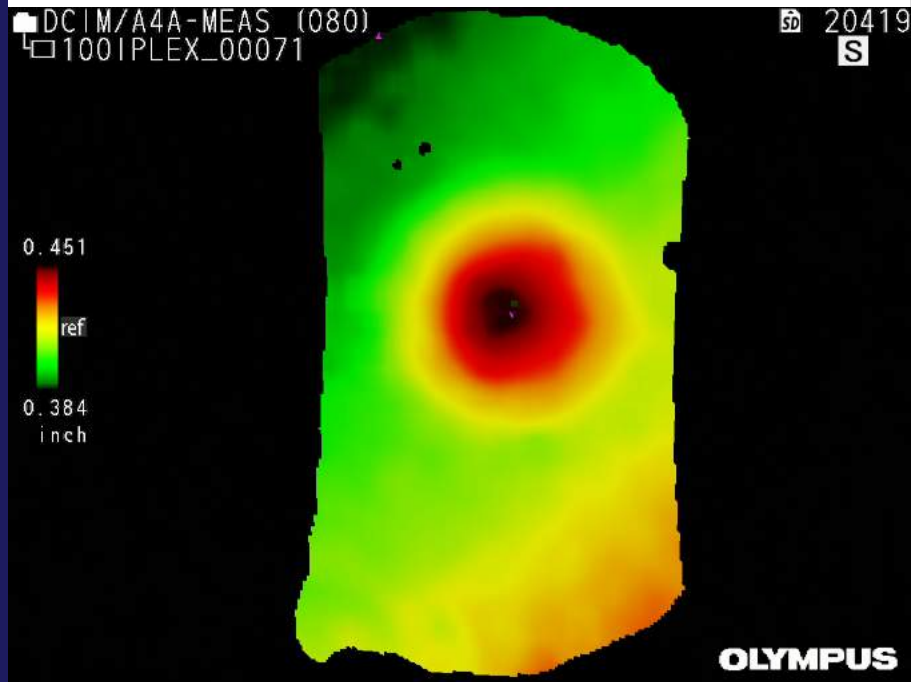
Heat Map



Feature Overview

Heat Map

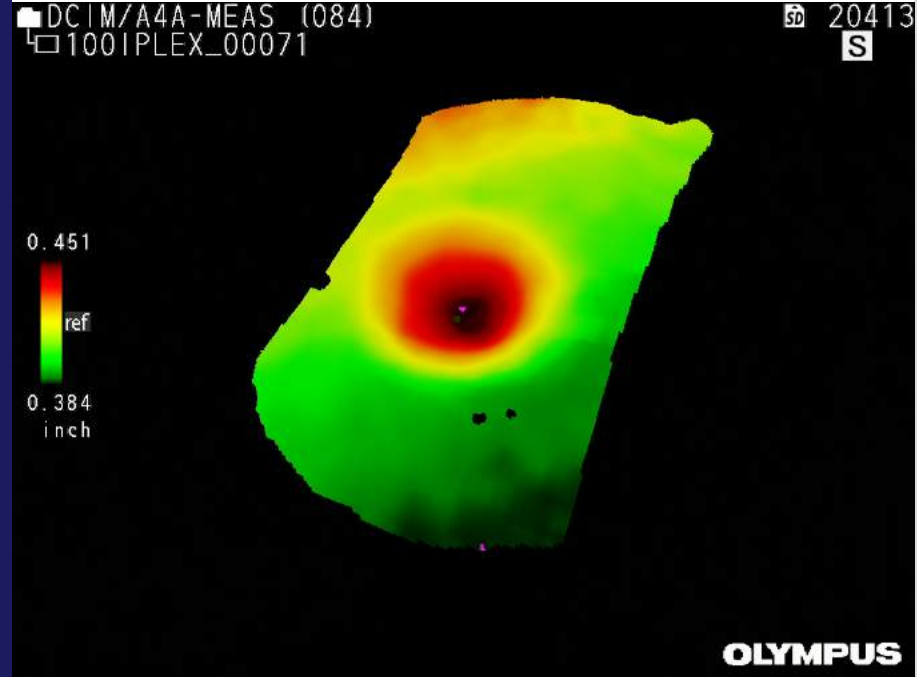
1. Colors correspond to distance
2. Initial mode is tip to target



Feature Overview

Heat Map

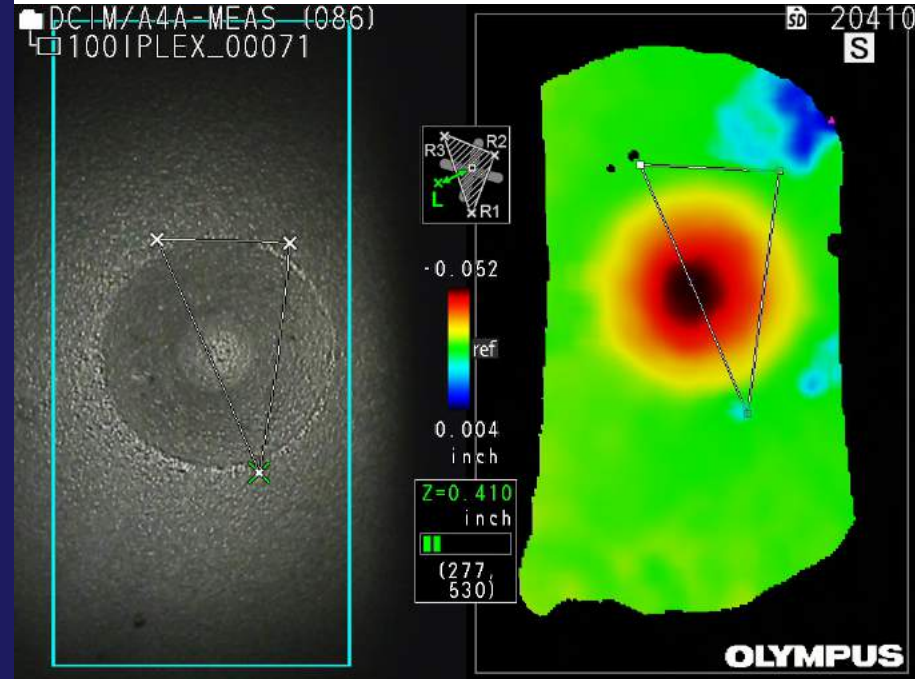
1. Colors correspond to distance
2. Initial mode is tip to target



Feature Overview

Heat Map

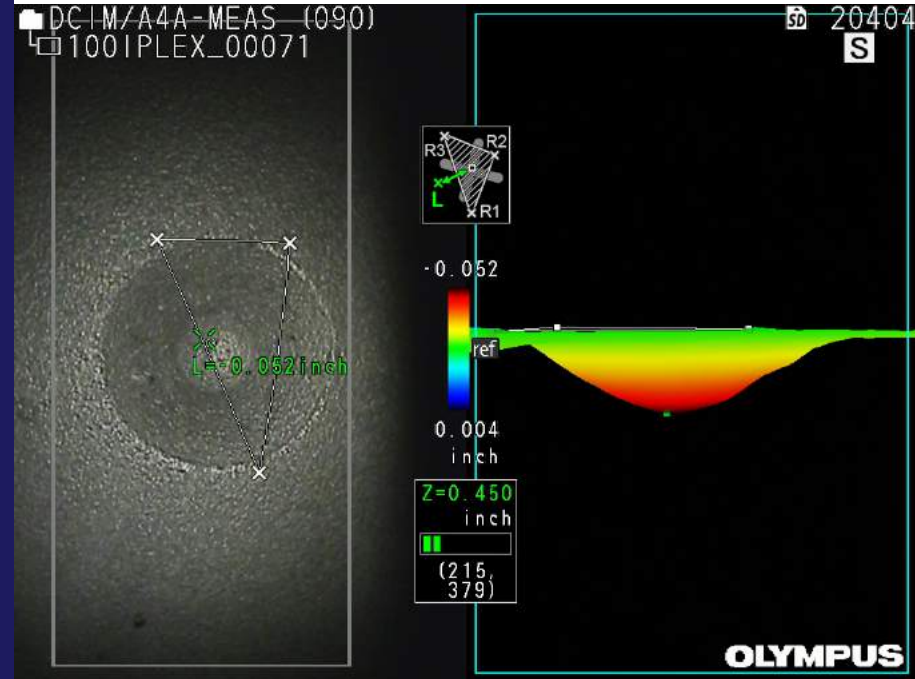
1. Colors correspond to distance
2. Initial mode is tip to target
3. Distance relative to a reference plane is also available

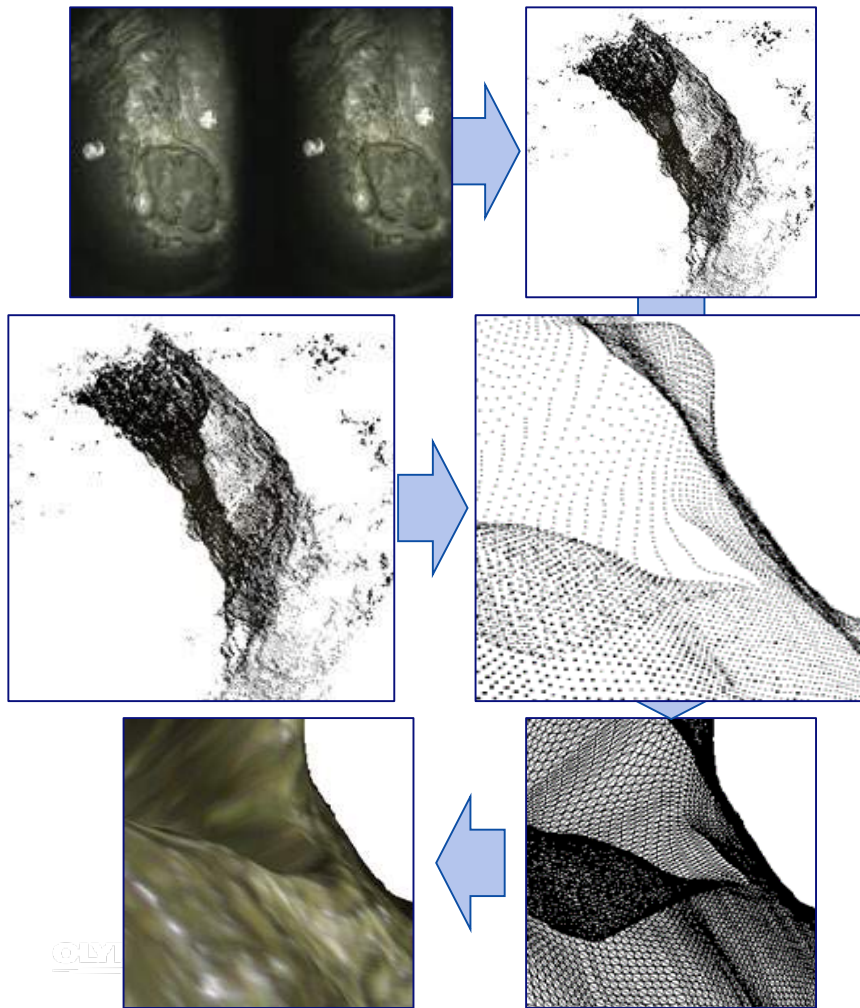


Feature Overview

Heat Map

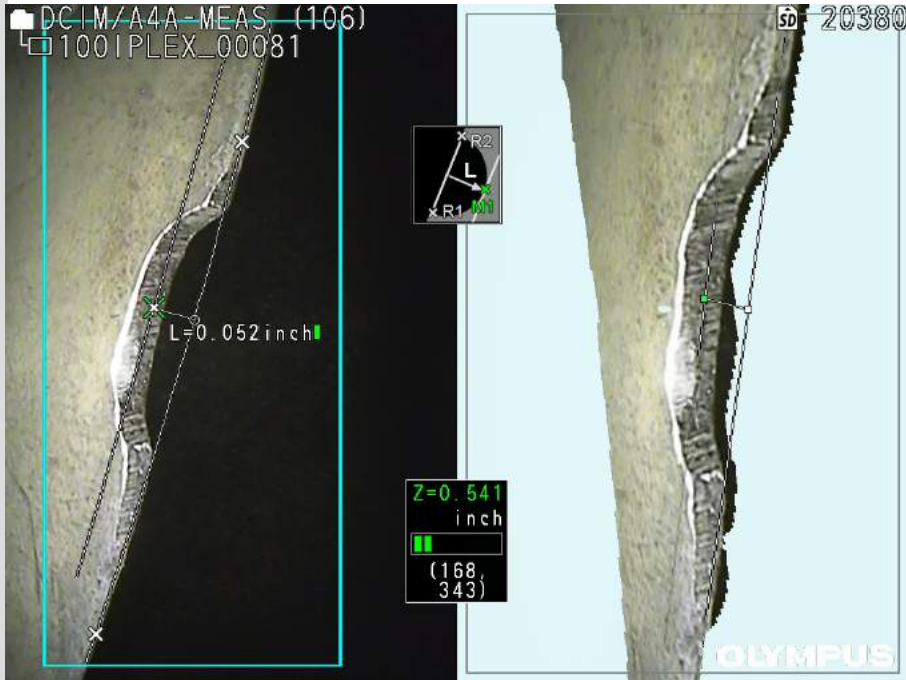
1. Colors correspond to distance
2. Initial mode is tip to target
3. Distance relative to a reference plane is also available





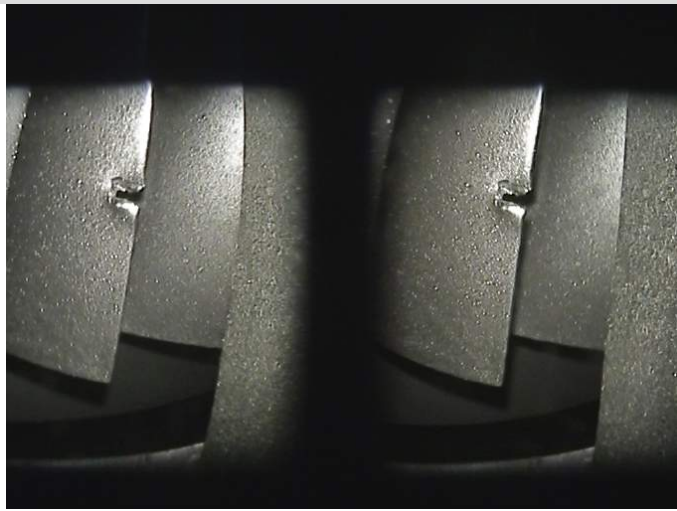
3D Modelling is Qualitative

1. All-point matching
2. Noise reduction and smoothing
3. Polygon mesh
4. Texture mapping



3D Modelling is Qualitative

1. It helps the inspector understand what they are inspecting



3D Modelling is Qualitative

1. It helps the inspector understand what they are inspecting
2. It also helps the inspector understand what the scope is seeing/calculating



□ DCIM/A4A-MEAS (020)
□ A4A-MEAS_00004

20521
S



3D Modelling is Qualitative

1. It helps the inspector understand what they are inspecting
2. It also helps the inspector understand what the scope is seeing/calculating

Questions?

OLYMPUS[®]

