

A SHM- Damage Monitoring Roadmap & Applications

M-A De Smet
A-SHM project Leader
Engineering Department

A. Payton
SEE
Customer Support Engineering

L. Wenk
SEM
Customer Support Engineering

AIRBUS

Airframe Structural Health Monitoring (A-SHM) - Context

Voice of Customer !

Optimization of fleet operation

Reduce down time

Maintenance cost reduction

Concerned Maintenance tasks :

Planned

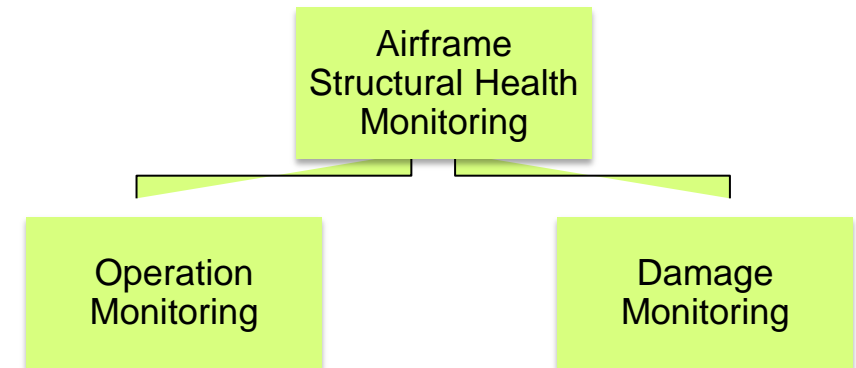
Unplanned

AIRBUS Solutions :

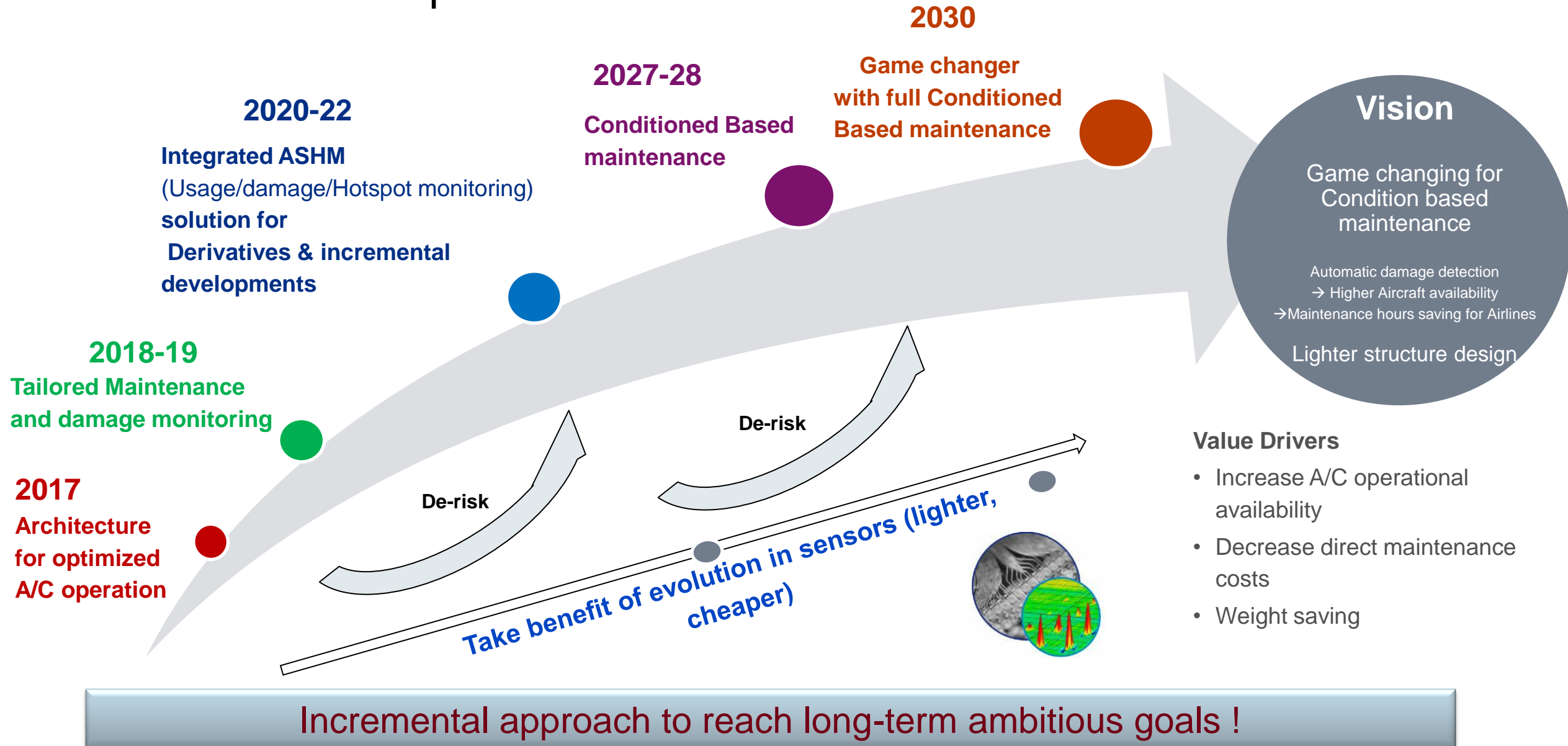
Full Digital Aircraft



2018 Quick Wins
... 2027 target:
Condition based Maintenance

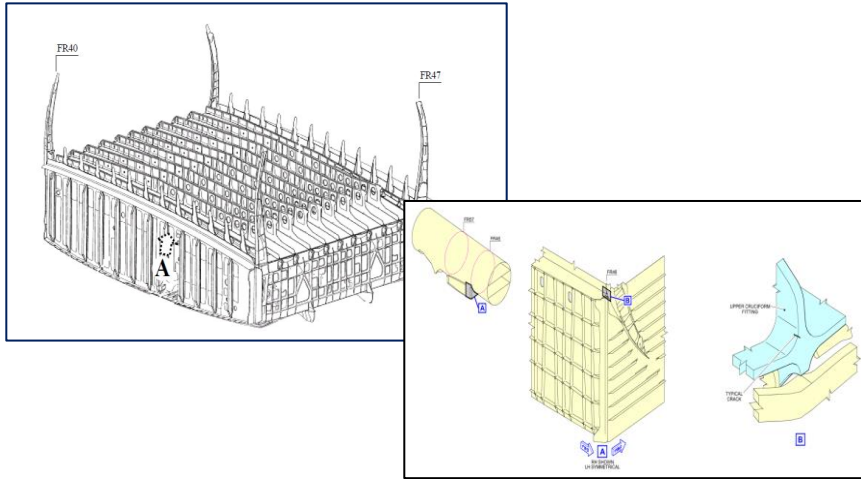


A-SHM Roadmap



A-SHM DM – Field of applications – Drivers

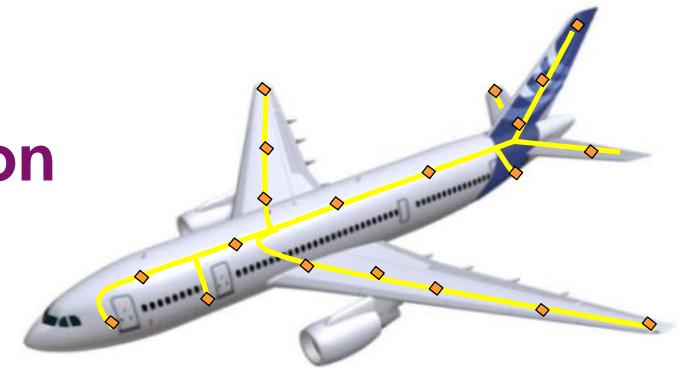
1st driver : The use case



Determining :

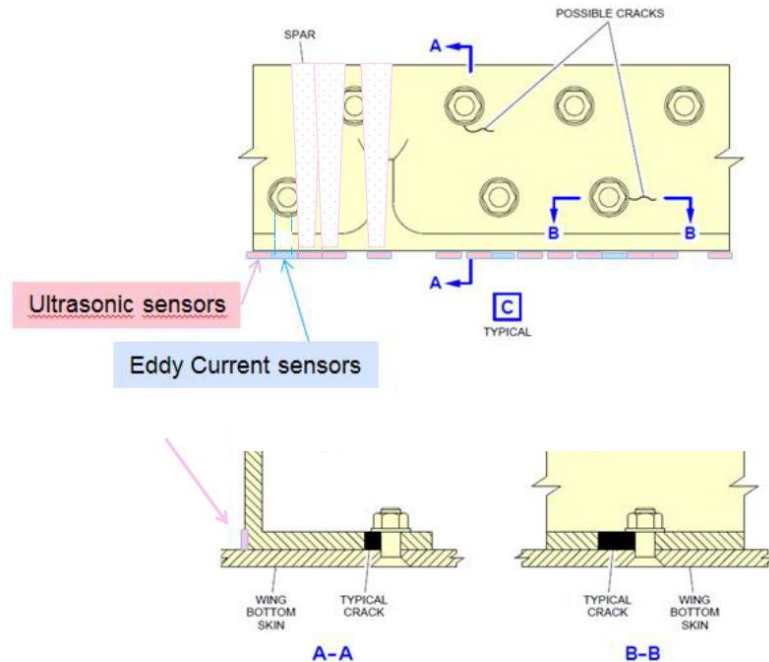
Damages characterization
& Environmental conditions

Other drivers : Robustness – Business Case - Certification
- Retrofit ability - Digitalization & Self Sustaining



Questioned on demand & on ground - Durability for 10 to 20 years !

A-SHM DM Application- Metallic structure- All crack directions



Solution offers retrofit ability !

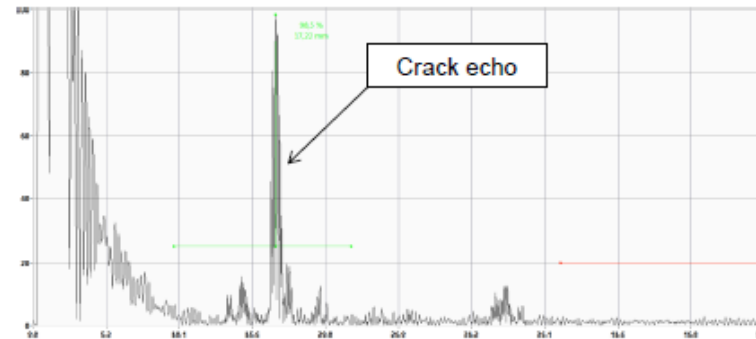
1st generation:

All crack direction detection with

- Ultrasonic (UT) sensors for parallel to surface cracks
- Eddy current (ET) sensors for perpendicular to surface



UT result



6 mm crack is detected

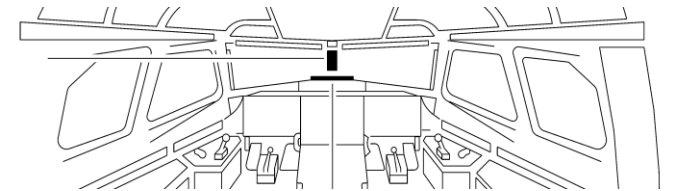
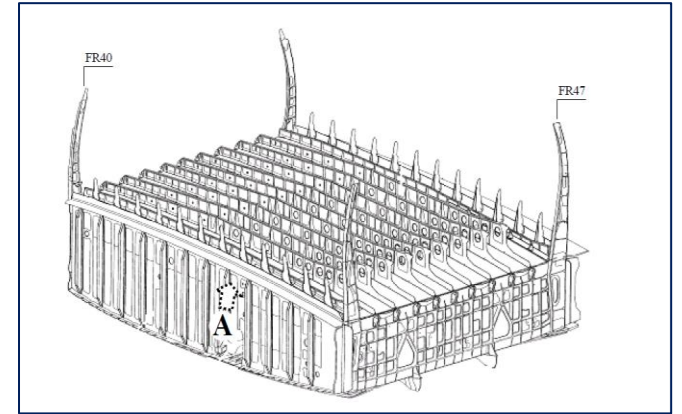


UT and ET sensors TRL6 by end 2018 - Qualification program by end 2019

A-SHM DM Application- Candidate selection criteria

Maintenance *ideal candidates* to benefit from SHM solution:

- Low repeat interval (not aligned with maintenance checks)
- Heavy access
- Risk of collateral damage during access
- Low risk of in service finding
- Long and/or complex inspection
- Rather localized damage scenario that can be addressed with current SHM capabilities



Short term applications driven by business case

THANK YOU